

+AF300H.TT-17.BV-7_L_ALU

SATURNO WITH TUNNEL AND PANNELLO MUSICALE - LEAVES



Dimensions	Safety area	Impact area	Falling height HIC	Physical footprint	Number of users
7,5 x 9,5 m	0 mq	90 cm	4,5 x 6 x 3 m	15	

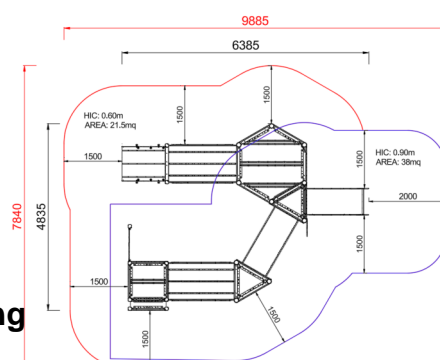
Characteristics

Age range

3-12

Materials

Plan



Area di sicurezza totale / Total safety area: 59.5mq
Altezza Max di Caduta / Max falling height: 0.90m

Picture



Manufacturer

Pozza 1865 S.R.L.

Country of manufacturing

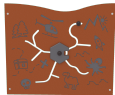
ITALY



Components list



xBV-3.1_L_ALU - NG Globe Panel Leaves
N. 1 .



xBV-4_L_ALU - NG Helicopter Activity Panel Leaves
N. 1 Made of colored polyethylene, sandwich type, with flow lanes, rotating disk and central knob



xG_90X90_00-60_ALU - NG Leg 90x90 from 00 60
N. 3 .



xGT-08_ALU - NG Climbing h50 cm
NR 1 Climbing between towers made of recycled material with resin climbing rocks



xHT6-4_ALU - NG Hexagonal tower less roof
NR 1 made of 6 aluminum beams, 1 hexagonal platform and mounted at 40 cm height



xLP-20_ALU - NG Large Leaf Accessory
N. 1 Leaves panel



xLP-5_ALU - NG Small Leaf Accessory
N. 1 Leaves panel



xP-7_L_ALU - NG Green Simple Panel
N. 1 Panel made of HDPE polyethylene, bi-color 86cm in width with drawing on the outer layer. all the fixing elements in Stainless steel



xPI-5_ALU - NG Inclined mobile bridge
NR 1 Made of impregnated wood, with laminated wood beams oscillating hanging on to the handrail with steel ropes coated



xPR_ALU - NG Fantasy Railing
NR 1 Fantasy railing in painted steel



xQ-4_ALU - NG Square tower h 40 cm (without roof)
NR 1 Composed of 4 posts having a 9 x 9 cm section by aluminium, 1 square platform placed at a height of 40 cm



xS12-4_ALU - NG Inclusive staircase h40 cm
NR 1 Inclusive stair h40 made of carply and aluminum



xSVPX-9_L_ALU - NG Poly-Inox Slide h90 Leaves
N. 1 slide with lateral sides made of polyethylene and stainless steel slide certified according to the existing rules; starting platform height 90 cm; provided with a transversal bar.



**xT-9_ALU - NG Triangular tower
without roof h 90cm:**

NR 1 Composed of 3 posts having a pentagonal section by lamellar wood, 1 square platform placed at a height of 90 cm.

METODO DI FISSAGGIO A TERRA DEI MONTANTI DEL GIOCO: Attrezzatura predisposta per fissaggio a terra mediante l'utilizzo di appositi telai metallici.

INFORMAZIONI RELATIVE ALL'ISPEZIONE: Ispezione visiva periodica - Controllo della pulizia dell'attrezzatura - Controllo degli interspazi tra terreno ed attrezzatura - Controllo della consistenza del terreno - Controllo delle fondamenta - Controllo degli spigoli - Controllo dell'eventuale mancanza di parti - Controllo dell'usura eccessiva delle parti mobili (snodi e boccole) - Controllo dell'integrità dell'intera attrezzatura. Per le aree gioco soggette ad uso intensivo o vandalismo può essere necessaria un'ispezione giornaliera. Ispezione annuale periodica: Potrebbe rendersi necessario lo smontaggio di alcune parti per la verifica