

+AF104K.ALT-01_ALU
ROMA CON ALTALENA - FANTASY



Dimensions	Safety area	Impact area	Falling height HIC	Physical footprint	Number of users
11,4 x 15,2 cm	0 mq	190 cm	8 x 12,4 x 4,3 cm	35	

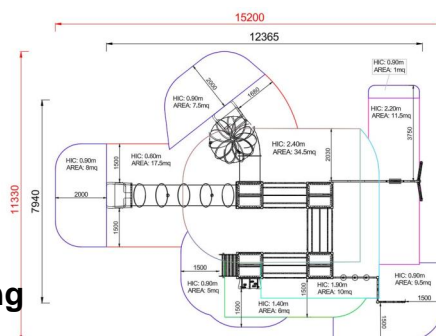
Characteristics

Age range

3-12

Materials

Plan



Area di sicurezza totale / Total safety area: 110mq
 Altezza Max di Caduta / Max falling height: 2.40m

Picture



Manufacturer

Pozza 1865 S.R.L.

Country of manufacturing

ITALY



Components list



x0820_ALU - NG Airplane Panel
NR 3 .



xP-2.1 _ALU - NG Porthole Themed Panel
NR 3 .



xABACOU0600-N_ALU - NG Panel with numbers-1
NR 3 Made of colored polyethylene, sandwich type, with central rotating disk.



xP-2_ALU - NG Protection lateral panels with polycarbonate portholes
NR 3 Made of polyethylene, with polycarbonate portholes, provided with stainless steel brackets for fixing them to the tower.



xALT-01_ALU - NG Swing kit with seat
NR 1 Made with painted steel girder and two easel supporting grids in lamellar wood. Rubber anti-shock seat with metal reinforcement inside. Chains made by hot galvanized steel rod; chain mesh avoiding fingers entrapment. Joints made by hot galvanized steel with swinging central joint



xP-3Q_ALU - NG Panels inside-out-1
NR 3 Made of polyethylene shaped with a central geometric hole, provided with stainless steel brackets for fixing them to the tower



xBV-2_ALU - NG Gear panel
NR 3 Vertical panel made of polyethylene and wood shelf.



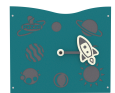
xP-3T_ALU - NG Panels inside-out-2
NR 3 Made of polyethylene shaped with a central geometric hole, provided with stainless steel brackets for fixing them to the tower



xBV-3.1_ALU - NG Globe Panel
NR 3 .



xP-7.1_ALU - NG Simple Turquoise Panel
NR 3 .



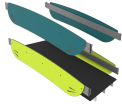
xBV-3_ALU - NG Galaxy panel
NR 3 Vertical panel made of polyethylene



xPAL-01_ALU - NG Angular Gym
NR 1 Vertical net with frame made of lamellar wood beams fixed through disappearing and passing nuts and bolts
Bars realized with stainless steel tubular
pegs, mounted into two lateral wooden supports
Climbing cord



xBV-4_ALU - NG Activity panel
NR 3 Made of colored polyethylene, sandwich type, with flow lanes, rotating disk and central knob



xPI-10_ALU - NG Fixed inclined bridge Fantasy

NR 1 Walkway made of impregnated wood, with polyethylene parapets



xPI-12_ALU - NG CLOSED TIBETAN INCLINED TUNNEL

NR 1 TIBETAN TUNNEL MADE OF STEEL CORD COVERED BY NYLON



xPI-6_ALU - NG Tibetan bridge

NR 1 The net is made of steel strands rope, 18 mm diameter, covered with a colored nylon braid, highly resistant. The knots are covered with shell-shape protections.



xQ-9_ALU - NG Square tower without roof h90 cm

NR 1 h90 cm tower without roof made of 4 EN EV6060 anodized aluminum post with custom mold 9x9cm with rounded edges, minimum thickness 2,7mm. Central platform made of HDPE polyethylene with anti slip coating and painted and anodized steel brackets. All the fixing elements made of stainless steel



xQT12-19_ALU - NG Tower h190 with tubular roof

NR 1 .



xQT4-14_ALU - NG Square tower h140 cm Fantasy

NR 1 Composed of 4 posts having a 9 x 9 mm section by aluminium, 1 square platform placed at a height of 140 cm. Coloured polyethylene gable roof



xQT4-24_ALU - NG Square tower h 240 cm

NR 1 Composed by 4 posts having a 9 x 9 cm section by aluminium, 1 square platform placed at a height of 240 cm. Coloured polyethylene gable roof



xS-9_ALU - NG Climbing ladder h90 cm Fantasy

NR 1 made of aluminium, complete with handrails and protective panels made of polyethylene



xSCL2-9_ALU - NG Climbing Platform h90 cm

NR 1 .



xSW-24_ALU - NG Tube-shaped slide h 140 cm diameter 80 cm-2

NR 1 Polyethylene slide certified according to the existing rules; starting platform height 140 cm



xSW-E-24_ALU - NG Tube Slide h240 (spiral)

NR 1 .