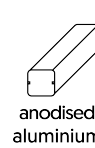


## +AF107PB.SW-14\_L\_ALU PEGASO WITH TUBE SLIDE - LEAVES

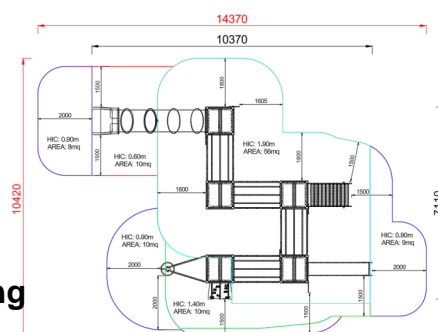


Dimensions	Safety area	Impact area	Falling height HIC	Physical footprint	Number of users
10,1 x 13,9 m	76 mq	190 cm	7,1 x 9,9 x 4,1 m	40	

Characteristics	hdpe	stainless steel screws	use under surveillance
			

Age range	Materials	Made of EN EV6060 anodised aluminium 9x9cm custom mold with rounded edges, minimum thickness 2,7mm
From 3 to 12 years	 anodised aluminium	

### Plan



### Picture



**Manufacturer**  
Pozza 1865 S.R.L.

**Country of manufacturing**

ITALY 

Area di sicurezza totale / Total safety area: 103mq  
Altezza Max di Caduta / Max falling height: 1.90m

## Components list



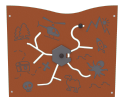
**xABACOU0600-N\_L\_ALU - NG  
Numbers Panel Leaves**  
N. 1 .



**xABACOU0600-S\_L\_ALU - NG Mirror  
Panel Leaves**  
N. 1 .



**xBV-3.1\_L\_ALU - NG Globe Panel  
Leaves**  
N. 1 .



**xBV-4\_L\_ALU - NG Helicopter Activity  
Panel Leaves**  
N. 1 Made of colored polyethylene,  
sandwich type, with flow lanes, rotating  
disk and central knob



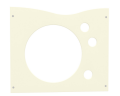
**xCTBR0012\_ALU - NG Fantasy  
holding bar**  
NR 1 Fantasy steel holding bar L.860



**xLP-20\_ALU - NG Large Leaf  
Accessory**  
N. 1 Leaves panel



**xLP-5\_ALU - NG Small Leaf Accessory**  
N. 3 Leaves panel



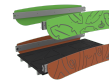
**xP-3C\_ALU - NG Panels inside-out**  
NR 1 Made of polyethylene shaped with  
a central geometric hole, provided with  
stainless steel brackets for fixing them to  
the tower



**xP-7\_L\_ALU - NG Green Simple Panel**  
N. 2 Panel made of HDPE polyethylene,  
bi-color 86cm in width with drawing on  
the outer layer. all the fixing elements in  
Stainless steel



**xPAL-12\_ALU - NG Single Vertical  
Wall Bars**  
NR 3 .



**xPD-10\_L\_ALU - NG Basic Straight  
Bridge Leaves**  
N. 1 Walkway made of impregnated  
wood, with polyethylene parapets



**xPD-5\_ALU - NG Right mobile bridge**  
N. 1 Mobile bridge made of a painted  
steel frame with HDPE moving flowers as  
base and a rubber floor for safety



**xPD-6\_ALU - NG Tibetan bridge-1**  
NR 1 The net is made of steel strands  
rope, 18 mm diameter, covered with a  
colored nylon braid, highly resistant. The  
knots are covered with shell-shape  
protections.



**xPI-5\_ALU - NG Inclined mobile bridge**  
NR 1 Made of impregnated wood, with  
laminated wood beams oscillating  
hanging on to the handrail with steel  
ropes coated



**xQ-14\_ALU - NG Square tower h140  
cm without roof**  
NR 1 Composed of 4 posts having a  
diameter of 10cm of galvanized steel, 1  
square platform placed at a height of 140  
cm



**xQ-19\_ALU - NG Square tower h 190 cm without roof:**

NR 1 Composed of 4 posts having a 9 x 9 cm section by lamellar wood, 1 square platform placed at a height of 190 cm.



**xQT12-19\_ALU - NG Tower h190 with tubular roof**

NR 1 .



**xQT4-14\_L\_ALU - NG Tower h140 with Roof Leaves**

N. 1 Composed by 4 posts having a 9 x 9 cm section by aluminium, 1 square platform placed at a height of 140 cm. Coloured polyethylene gable roof.



**xSCL1-14\_ALU - NG Free-climbing inclined ramp h. 140**

NR 1 H140 Climbing platform - Made of an HDPE panels with anti slip coating, resin climbing holds on top. Support structure made of painted and galvanized steel. All fixing elements made of stainless steel



**xSVPX-14\_L\_ALU - NG Poly-Inox Slide h140 Leaves**

N. 1 slide with lateral sides made of polyethylene and stainless steel slide certified according to the existing rules; starting platform height 140 cm; provided with a transversal bar.