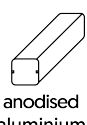


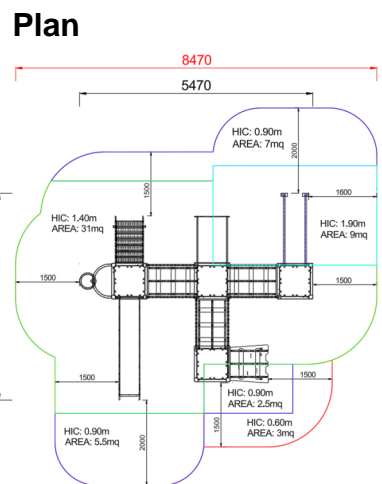
**+AE103.S.POLY150\_ALU**  
**MANGO CON SCALA - EASY**



Dimensions	Safety area	Impact area	Falling height HIC	Physical footprint	Number of users
	8,5 x 8,9 m	34.5 mq	190 cm	5,5 x 4,9 x 3,3 m	20

Characteristics	hdpe	stainless steel screws	use under surveillance
			

Age range	Materials	Made of EN EV6060 anodized aluminium 9x9cm custom mold with rounded edges, minimum thickness 2,7mm
3-12	 anodised aluminium	



**Manufacturer**  
Pozza 1865 S.R.L.

**Country of manufacturing**  
ITALY 

Area di sicurezza totale / Total safety area: 58mq  
Altezza Max di Caduta / Max falling height: 1.90m

## Components list



**xABACOGT-01\_E\_ALU - NG OXO Panel Easy**

NR 1 Two colored polyethylene panel with serigraphy XOX symbols, 9 half-moon rolling panels, Inox steel bolts.



**xBV-7\_E\_ALU - NG Shop panels Easy**

NR 1 Vertical panel made of polyethylene and wood shelf.



**xP-2\_E\_ALU - NG Protection lateral panels with polycarbonate portholes Easy**

NR 1 Made of polyethylene, with polycarbonate portholes, provided with stainless steel brackets for fixing them to the tower.



**xP-7.1\_E\_ALU - NG Simple Skyblue Panel**

N. 1 .



**xP-7\_E\_ALU - NG Green Panel**

NR 1 .



**xPI-10\_E\_ALU - NG Fixed inclined bridge Easy**

NR 2 Walkway made of impregnated wood, with polyethylene parapets



**xPI-6\_E\_ALU - NG Tibetan bridge Easy**

NR 1 The net is made of steel strands rope, 18 mm diameter, covered with a colored nylon braid, highly resistant. The knots are covered with shell-shape protections.



**xPR\_E\_ALU - NG Easy Railing**

NR 1 Fantasy railing in painted steel



**xPS-14\_E\_ALU - NG Spiral perch h 140 cm Easy**

NR 1 Composed by stainless steel tubular, support bracket and locking handles in painted steel



**xQ-14\_E\_ALU - NG Square tower h140 cm without roof Easy**

NR 1 Composed of 4 posts having a 9 x 9 cm section aluminium, 1 square platform placed at a height of 140 cm.



**xQ-4\_E\_ALU - NG Square tower h 40 cm Easy (without roof)**

NR 1 Composed of 4 posts having a 9 x 9 cm section aluminium, 1 square platform placed at a height of 90 cm.



**xQT12-9\_E\_ALU - NG Easy Square tower h90 cm**

NR 1 Composed by 4 posts having a 9 x 9 cm section by aluminium, 1 square platform placed at a height of 90 cm. Roof made of painted steel tubes.



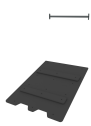
**xQT4-14\_E\_ALU - NG Square tower h140 cm Easy**

NR 1 Composed by 4 posts having a 9 x 9 cm section by aluminium, 1 square platform placed at a height of 140 cm. Coloured polyethylene gable roof.



**xS-14\_E\_ALU - NG Climbing ladder h140 cm Easy**

NR 1 made of aluminium, complete with handrails and protective panels made of polyethylene.



**xSCL2-4\_ALU - NG Climbing Platform**

**h40 cm**

NR 1 .



**xSTI-14\_E\_ALU - NG Descending tube**

**slide h 140 cm Easy**

NR 1 .



**xSVPX-14\_E\_ALU - NG Straight slide**

**h140 cm Easy**

NR 1 Easy slide with lateral sides made of polyethylene and stainless steel slide certified according to the existing rules; starting platform height 140 cm; provided with a transversal bar.



**xTT-17\_E\_ALU - NG Polyethylene**

**Tunnel Easy**

NR 1 Made of polyethylene provided with panels of connection to polyethylene turrets