

+AC2709SE.PD-5_ALU

MALDIVES CON PONTE MOBILE - FANTASY



Dimensions	Safety area	Impact area	Falling height HIC	Physical footprint	Number of users
14,9 x 9,4 cm	55 mq	140 cm	11,3 x 6,4 x 4 cm	27	

Characteristics

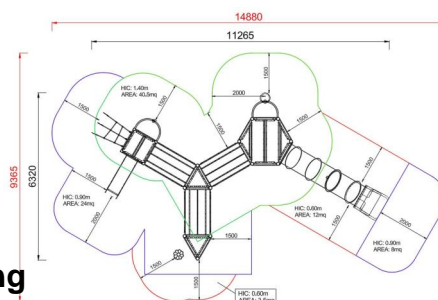
Age range

3-12

Materials



Plan



Area di sicurezza totale / Total safety area: 88mq
Altezza Max di Caduta / Max falling height: 1.40m

Picture



Manufacturer

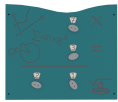
Pozza 1865 S.R.L.

Country of manufacturing

ITALY



Components list



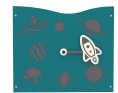
**xABACOGT-02_ALU - NG
Multiplication Panel**
NR 1 .



**xABACOU0700_ALU - NG Rudder
panel**
NR 1 Made of polyethylene, complete
with rudder.



**xBV-11_ALU - NG Activity geometry
game**
NR 1 Activity geometry game made of
coated steel rope and fixed to the load-
bearing structure by passing through
concealed bolts, two-color HDPE
polyethylene engraved with activity path
and figures. All hardware and fasteners
in stainless steel



xBV-3_ALU - NG Galaxy panel
NR 1 Vertical panel made of polyethylene



**xCTBR0012_ALU - NG Fantasy
holding bar**
NR 1 Fantasy steel holding bar L.860



xGT-06_ALU - NG Step Flower
NR 1 Polyethylene flower supported by a
galvanized steel bean



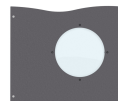
**xHT5-14_ALU - NG Esagonal tower h
140 cm with roof**
NR 2 Composed of 6 posts having a 9 x
9 cm section by lamellar wood, 1
esagonal platform placed at a height of
140 cm. Coloured gable roof



**xHT5-9_ALU - NG Esagonal tower h
140 cm with roof-1**
NR 1 Composed of 6 posts having a 9 x
9 cm section by lamellar wood, 1
esagonal platform placed at a height of
140 cm. Coloured gable roof



**xHT6-4_ALU - NG Hexagonal tower
less roof**
NR 1 made of 6 aluminum beams, 1
hexagonal platform and mounted at 40 cm
height



**xP-2_ALU - NG Protection lateral
panels with polycarbonate portholes**
NR 1 Made of polyethylene, with
polycarbonate portholes, provided with
stainless steel brackets for fixing them to
the tower.



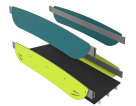
**xP-7.1_ALU - NG Simple Turquoise
Panel**
NR 1 .



xP-7_ALU - NG Simple Lime Panel
NR 2 Panel made of HDPE polyethylene,
bi-color 86cm in width with drawing on
the outer layer. all the fixing elements in
Stainless steel



xPD-5_ALU - NG Right mobile bridge
NR 1 Mobile bridge made of a painted steel frame with HDPE moving flowers as base and a rubber floor for safety



xPI-10_ALU - NG Fixed inclined bridge Fantasy
NR 3 Walkway made of impregnated wood, with polyethylene parapets



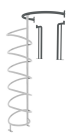
xPI-5_ALU - NG Inclined mobile bridge
NR 1 Made of impregnated wood, with laminated wood beams oscillating hanging on to the handrail with steel ropes coated



xPP-14_ALU - NG Fireman pole h 140 cm
NR 2 Made of tubular stainless steel



xPP-9_ALU - NG Fireman pole h 90 cm
NR 1 Made of tubular stainless steel



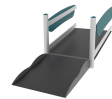
xPS-14_ALU - NG Spiral perch h 140 cm
NR 1 Composed by stainless steel tubular, support bracket and locking handles in painted steel



xQT4-9_ALU - NG Square tower h 90cm style Fantasy
NR 1 Composed by 4 posts having a 10 cm diameter by anodized steel, 1 square platform placed at a height of 90 cm. Coloured polyethylene gable roof



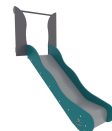
xS10-9_ALU - NG Steel stepladder h90 cm
NR 1 Composed by painted steel



xS2-4_ALU - NG Accessible Climbing Platform h40 cm
NR 1 .



xS6-9_ALU - NG Shroud lift h90 cm
NR 1 Composed by climbing net in steel rope. Included by thrust bar



xSVPX-9_ALU - NG Straight slide h90 cm Fantasy
NR 1 slide with lateral sides made of polyethylene and stainless steel slide certified according to the existing rules; starting platform height 90 cm; provided with a transversal bar.



xSW-14_ALU - NG Tube-shaped slide h 140 cm diameter 80 cm
NR 1 Polyethylene slide certified according to the existing rules; starting platform height 140 cm



xT-4_ALU - NG Triangular tower without roof h 40cm:
NR 1 Composed of 3 posts having a pentagonal section by lamellar wood, 1 square platform placed at a height of 40 cm.



xT-9_ALU - NG Triangular tower without roof h 90cm:
NR 1 Composed of 3 posts having a pentagonal section by lamellar wood, 1 square platform placed at a height of 90 cm.