

+AF101B.ALT-01_C_ALU HOOK BABY WITH ALTALENA - COLORI



Dimensions	Safety area	Impact area	Falling height HIC	Physical footprint	Number of users
7,7 x 8,8 m	0 mq	90 cm	2,8 x 6,8 x 3 m	10	

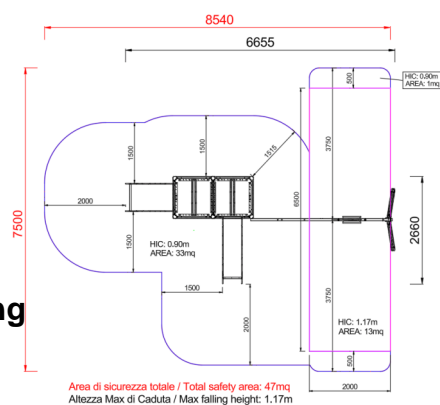
Characteristics

Age range

3-12

Materials

Plan



Picture



Manufacturer

Pozza 1865 S.R.L.

Country of manufacturing

ITALY



Components list

xABACOGT-02_C_ALU - NG

Multiplication Panel Colori

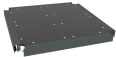
N. 1 .

xALT-01_ALU - NG Swing kit with seat



NR 1 Made with painted steel girder and two easel supporting grids in lamellar wood. Rubber anti-shock seat with metal reinforcement inside. Chains made by hot galvanized steel rod; chain mesh avoiding fingers entrapment. Joints made by hot galvanized steel with swinging central joint

xC2_ALU - NG Square platform, under tower



N. 1 Made of non slip material.

xG_90X90_00-60_ALU - NG Leg 90x90 from 00 60

N. 2 .



xGT-08_ALU - NG Climbing h50 cm



NR 1 Climbing between towers made of recycled material with resin climbing rocks

