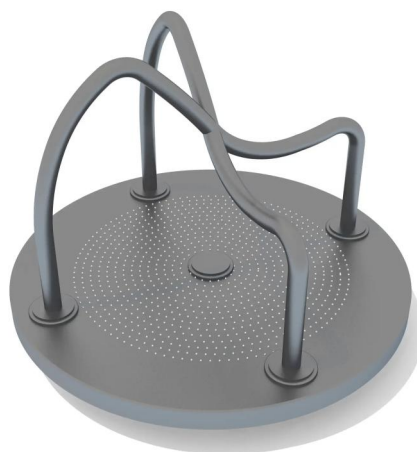


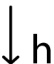
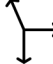

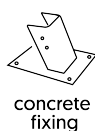


## G0600 GIOSTRA A TUBI



Dimensions		Safety area		Impact area		Falling height HIC		Physical footprint		Number of users
		525 x 525 cm		0 mq		0 cm		125 x 125 x 70 cm		6

### Characteristics



### Age range

Fino a 12 anni

### Materials



Hot-dip galvanized and powder coated or powder galvanized and powder coated steel construction of 90 x 90 mm or 120 diameter profile



### Manufacturer

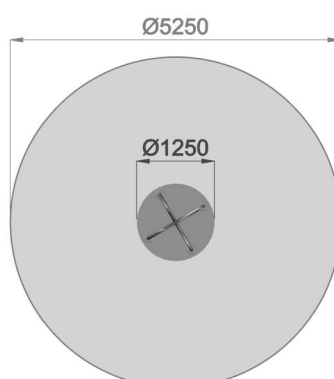
Pozza 1865 S.R.L.

### Country of manufacturing

ITALY



### Plan



Falling Area / Area di Caduta 22mq

### Picture

