

**+AF102SSU.SW-19\_ALU**  
**ARIES - FANTASY**



<b>Dimensions</b>		Safety area		Impact area		Falling height HIC		Physical footprint		Number of users
		18,8 x 16,6 cm		44.5 mq		240 cm		14,8 x 13,1 x 5 cm		30

**Characteristics**

**Age range**

3-12

**Materials**



**Manufacturer**

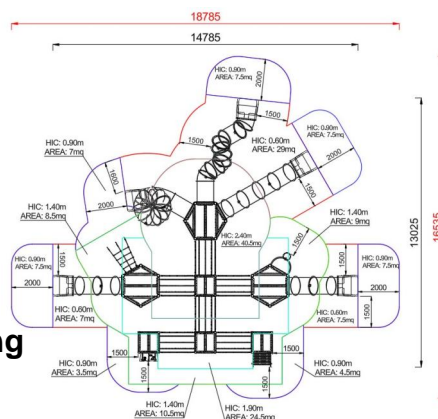
Pozza 1865 S.R.L.

**Country of manufacturing**

ITALY



**Plan**



Area di sicurezza totale / Total safety area: 182mq  
Altezza Max di Caduta / Max falling height: 2.40m

**Picture**



## Components list



**xABACOGT-01\_ALU - NG OXO Panel Fantasy**

NR 1 Two colored polyethylene panel with serigraphy XOX symbols, 9 half-moon rolling panels, Inox steel bolts.



**xABACOGT-02\_ALU - NG Multiplication Panel**

NR 1 .



**xABACOU0600.O\_ALU - NG OPTICAL PANEL**

NR 1 OPTICAL EASY PANEL MADE OF POLYTHILENE



**xABACOU0600-N\_ALU - NG Panel with numbers-1**

NR 2 Made of colored polyethylene, sandwich type, with central rotating disk.



**xABACOU0600-S\_ALU - NG Mirror MAGIC Panel**

NR 4 Made of polyethylene, with mirror made polished stainless steel.



**xBV-2\_ALU - NG Gear panel**

NR 1 Vertical panel made of polyethylene and wood shelf.



**xBV-3.1\_ALU - NG Globe Panel**

NR 1 .



**xBV-3\_ALU - NG Galaxy panel**

NR 1 Vertical panel made of polyethylene



**xBV-6\_ALU - NG Shop panels**

NR 1 Vertical panel made of polyethylene and wood shelf.



**xC2\_ALU - NG Square platform, under tower**

NR 1 Made of non slip material.



**xC3\_ALU - NG Esagonal platform**

NR 1 Made of non-slip material



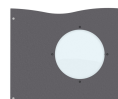
**xHT5-14\_ALU - NG Esagonal tower h 140 cm with roof**

NR 2 Composed of 6 posts having a 9 x 9 cm section by lamellar wood, 1 esagonal platform placed at a height of 140 cm. Coloured gable roof



**xHT5-24\_ALU - NG Esagonal tower h 240 cm with roof**

NR 1 Composed of 6 posts having a 9 x 9 cm section by lamellar wood, 1 esagonal platform placed at a height of 240 cm. Coloured gable roof



**xP-2\_ALU - NG Protection lateral panels with polycarbonate portholes**

NR 5 Made of polyethylene, with polycarbonate portholes, provided with stainless steel brackets for fixing them to the tower.



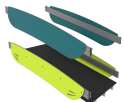
**xP-3T\_ALU - NG Panels inside-out-2**  
NR 1 Made of polyethylene shaped with a central geometric hole, provided with stainless steel brackets for fixing them to the tower



**xP-7.1\_ALU - NG Simple Turquoise Panel**  
NR 3 .



**xP-7\_ALU - NG Simple Lime Panel**  
NR 4 Panel made of HDPE polyethylene, bi-color 86cm in width with drawing on the outer layer. all the fixing elements in Stainless steel



**xPI-10\_ALU - NG Fixed inclined bridge Fantasy**  
NR 3 Walkway made of impregnated wood, with polyethylene parapets



**xPI-6\_ALU - NG Tibetan bridge**  
NR 3 The net is made of steel strands rope, 18 mm diameter, covered with a colored nylon braid, highly resistant. The knots are covered with shell-shape protections.



**xPS-14\_ALU - NG Spiral perch h 140 cm**  
NR 1 Composed by stainless steel tubular, support bracket and locking handles in painted steel



**xQT12-19\_ALU - NG Tower h190 with tubular roof**  
NR 1 .



**xQT4-14\_ALU - NG Square tower h140 cm Fantasy**  
NR 1 Composed of 4 posts having a 9 x 9 mm section by aluminium, 1 square platform placed at a height of 140 cm. Coloured polyethylene gable roof



**xQT4-9\_ALU - NG Square tower h 90cm style Fantasy**  
NR 2 Composed by 4 posts having a 10 cm diameter by anodized steel, 1 square platform placed at a height of 90 cm. Coloured polyethylene gable roof



**xRH-1\_ALU - NG Access ramp suitable for disabled people**  
NR 3 Made of impregnated lamellar wood.



**xS6-14\_ALU - NG Shroud lift h140 cm**  
NR 1 Composed by climbing net in steel rope. Included by thrust bar



**xS-9\_ALU - NG Climbing ladder h90 cm Fantasy**  
NR 1 made of aluminium, complete with handrails and protective panels made of polyethylene



**xSCL1-9\_ALU - NG Free-climbing inclined ramp h 90 cm**  
NR 1 H90 Climbing platform - Made of an HDPE panels with anti slip coating, resin climbing holds on top. Support structure made of painted and galvanized steel. All fixing elements made of stainless steel



**xSW-14\_ALU - NG Tube-shaped slide h 140 cm diameter 80 cm**  
NR 2 Polyethylene slide certified according to the existing rules; starting platform height 140 cm



**xSW-24\_ALU - NG Tube-shaped slide  
h 140 cm diameter 80 cm-2**

NR 1 Polyethylene slide certified  
according to the existing rules; starting  
platform height 140 cm



**xSW-E-24\_ALU - NG Tube Slide h240  
(spiral)**

NR 1 .



**xSW-S-24\_ALU - NG Tube Slide h240  
(snake)**

NR 1 .